



Consultant:

HSR Project Number: 16033-1

Project Date: 3-14-2018

Drawn By: HSR

Key Plan:

**REVIEW
NOT FOR
CONSTRUCTION**

Revisions:	No.	Description	Date

Graphic Scale: 0' 5' 10' 20' 30'

Last Update: 3/14/2018 12:04:23 PM

NEW ADDITION SQUARE FOOTAGE:

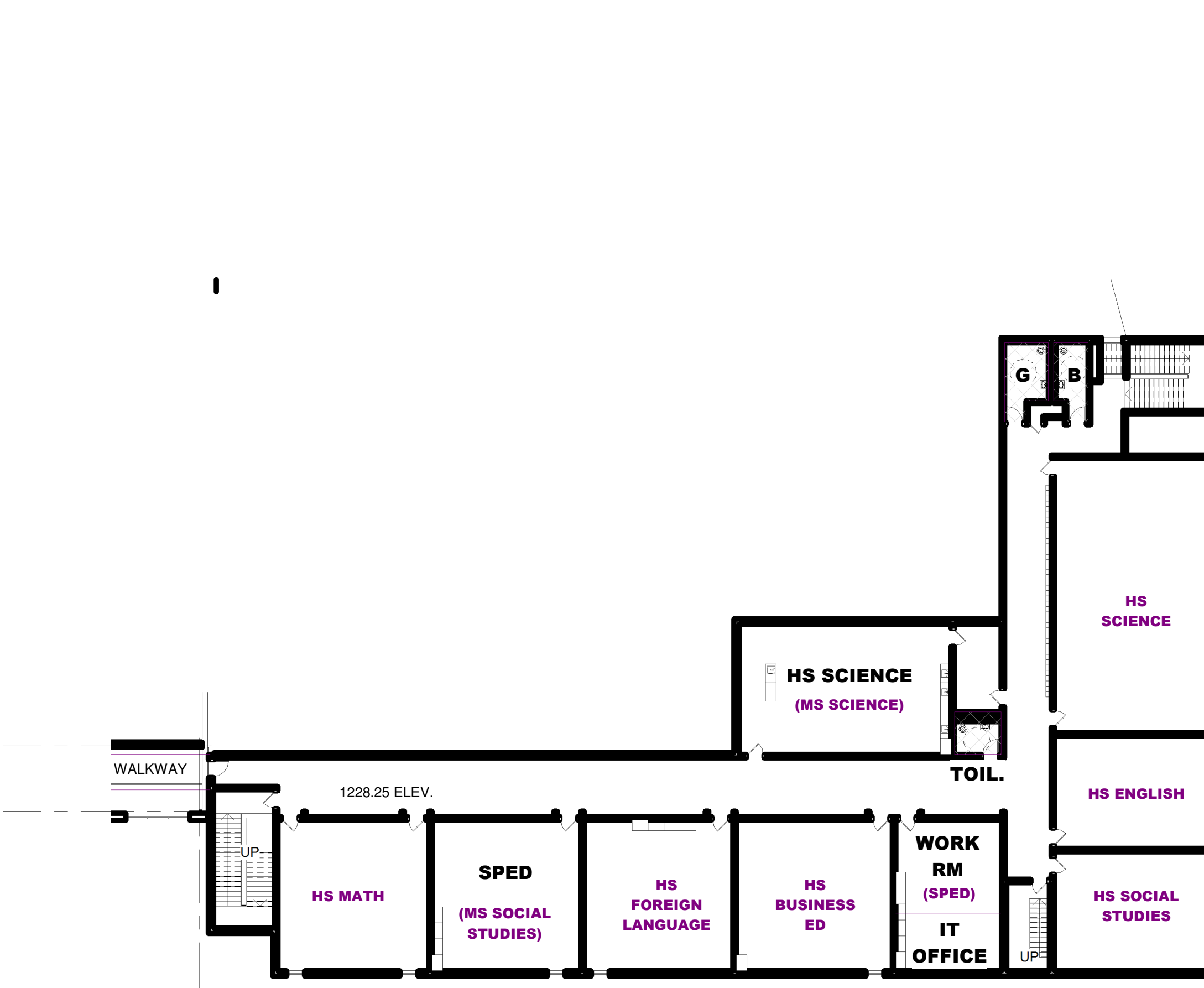
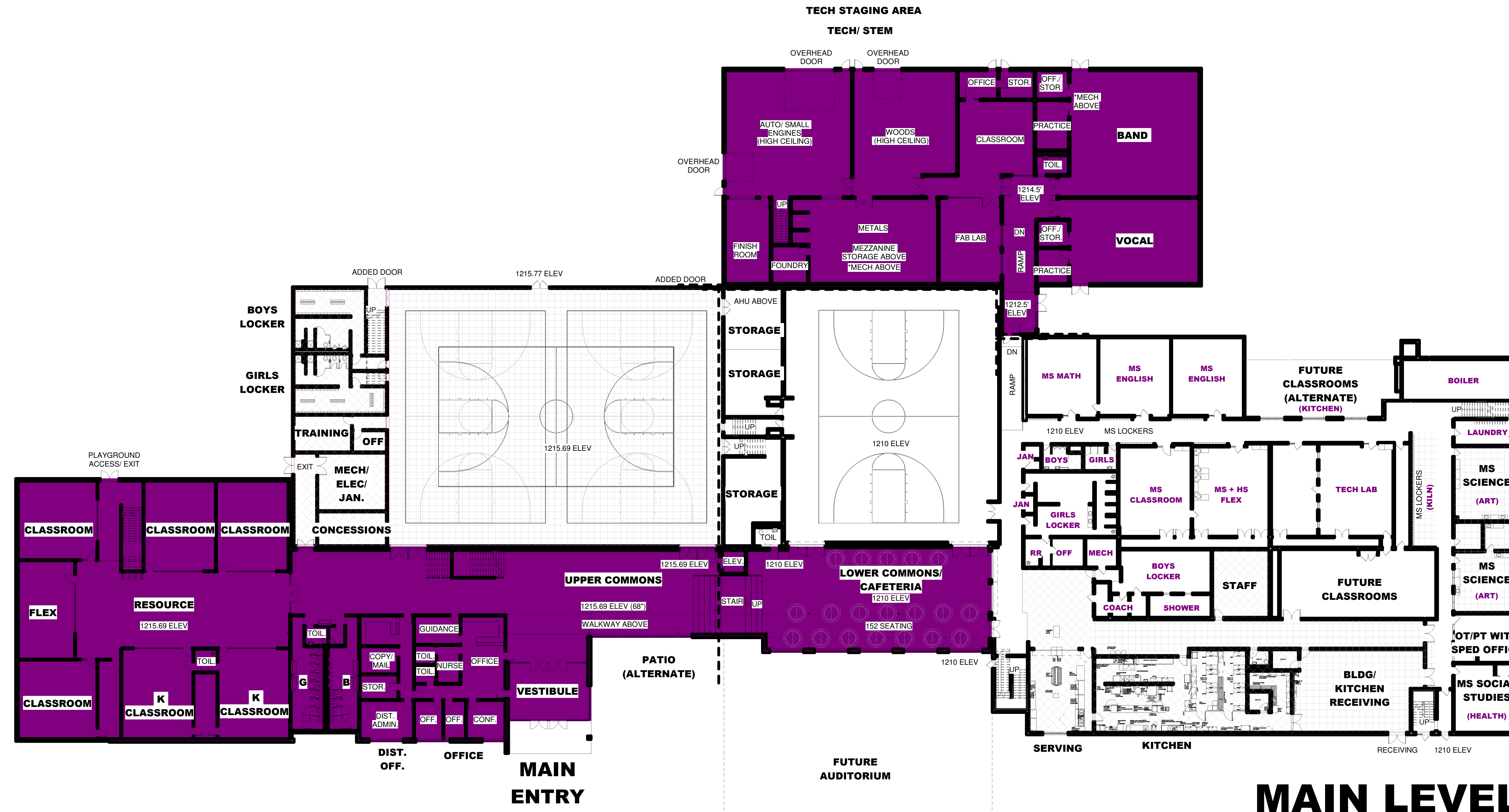
FIRST FLOOR
12,338 SF : FIRST FLOOR CORE AREA
9,299 SF : FIRST FLOOR ELEMENTARY CLASSROOM POD
13,572 SF : BAND/ VOCAL WITH SUPPORT SPACES/ STEM/ TECH ED
SECOND FLOOR
9,254 SF : SECOND FLOOR ELEMENTARY CLASSROOM POD
6,399 SF : SECOND FLOOR CORE AREA

TOTAL : 50,862 SF NEW CONSTRUCTION

1,348 SF WALKWAY CONNECTOR

HEAVY RENOVATION : 10,494 SF

LIGHT/ MED RENOVATION : 15,601 SF



ELEMENTARY/ ENTRY SECOND LEVEL

HIGH SCHOOL SECOND LEVEL